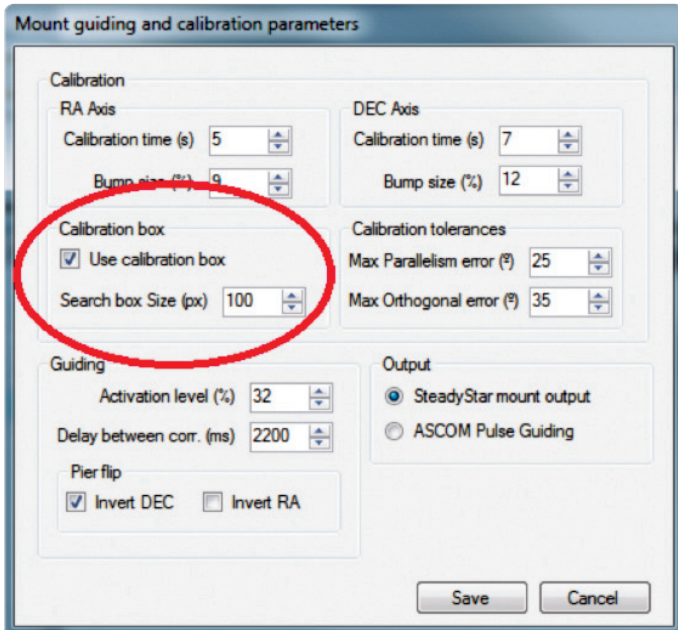




## New Orion SteadyStar features (Version 1.7.0)

### Mount Calibration Search Area

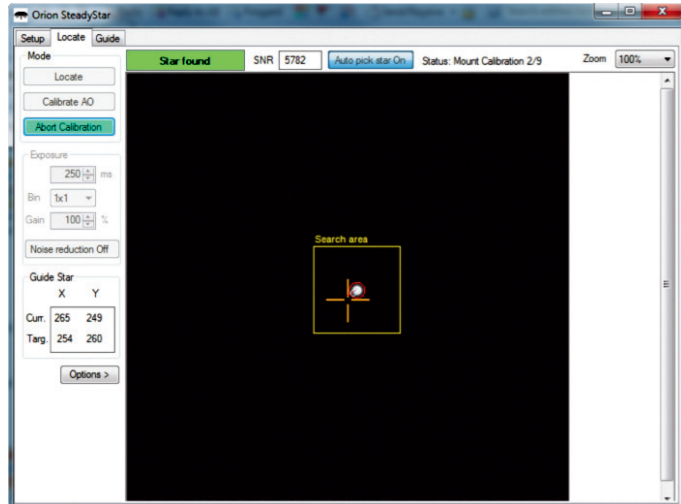


This feature can be activated from the "Mount guiding and calibration parameters" dialog.

When active, mount calibration will only search for star positions on a box around the previous star position. This prevents calibration from jumping to brighter stars that might enter the field of view during calibration.

The box size must be set in order to match calibration times for each axis. If the box is too large, the chances of capturing another star increase. If the box is too small, a single calibration bump command can send the star to an area outside the box.

### Guide Box Size



The guide box size can now be configured. Smaller sizes increase running speed and decrease the chance of a close star entering the field. The guiding image zoom is automatically adjusted.

